

# Power Line Filters Appliance Filters

## 62-AL/62-AC Series



Tested and found to be  
IAW VDE 0565 Part 3

### Features

- Low-cost plastic case
- Compact design requires minimal real estate space
- Suitable for products that must conform to FCC regulations
- Wide variety of circuit and filtering options
- Good filtering characteristics for both normal mode and common mode
- Epoxy molded for reliability
- Operating temperature: -25°C to +85°C (including temperature rise, see graph on page 61)

### Applications

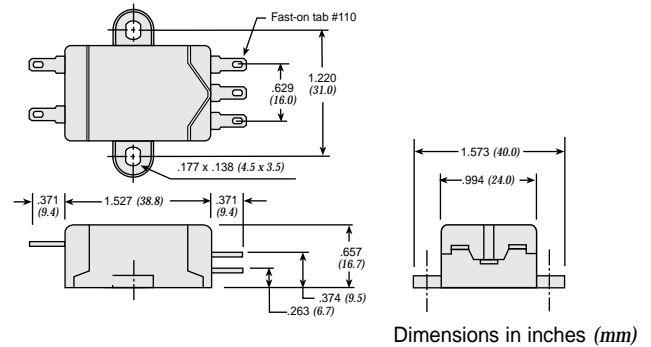
- Personal computers and peripherals
- Digital equipment
- Industrial equipment
- Vending machines
- Home appliances
- Office equipment

### Specifications

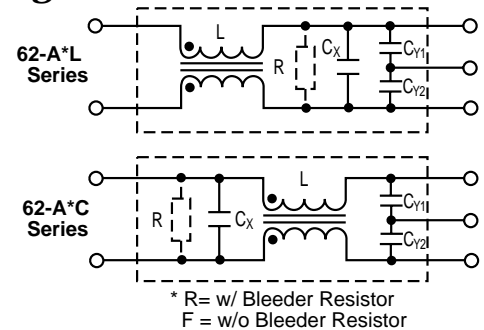
Model*	Rated Voltage (@ 50/60Hz)	Rated Current	Leakage Current (Max.)	Capacitance		Inductance (L <sub>1</sub> )	Temperature Rise (Max.)			
				C <sub>Y</sub>	C <sub>X</sub>					
62-AFL-010-3-11	250VAC	1.0A	0.35mA	2200pF	0.1uF	11.0mH	40°C			
62-AFC-010-3-11			0.50mA	3300pF						
62-AFL-010-5-11				1.6A				0.35mA	2200pF	
62-AFC-010-5-11			0.50mA					3300pF		
62-AFL-016-3-11		3.0A	0.35mA	2200pF		2.4mH				
62-AFC-016-3-11				0.50mA				3300pF		
62-AFL-016-5-11								4.5A	0.35mA	2200pF
62-AFC-016-5-11				0.50mA					3300pF	
62-AFL-030-3-11		6.0A	0.35mA	2200pF		0.53mH				
62-AFC-030-3-11				0.50mA				3300pF		
62-AFL-030-5-11								6.0A	0.35mA	2200pF
62-AFC-030-5-11				0.50mA					3300pF	
62-AFL-045-3-11		6.0A	0.35mA	2200pF		0.53mH				
62-AFC-045-3-11				0.50mA				3300pF		
62-AFL-045-5-11								6.0A	0.35mA	2200pF
62-AFC-045-5-11				0.50mA					3300pF	
62-AFL-060-3-11		6.0A	0.35mA	2200pF		0.53mH				
62-AFC-060-3-11				0.50mA				3300pF		
62-AFL-060-5-11								6.0A	0.35mA	2200pF
62-AFC-060-5-11				0.50mA					3300pF	

Note: All types are designed to meet the requirement of UL 1283, CSA 22.2. VDE 0565-3  
 Test voltage: 1500VAC one minute, line to ground  
 Insulation resistance: 300 Mohm min. at 500VDC  
 Voltage drop: 1V max.

\* Available with bleeder resistor  
 Replace F with R for part number



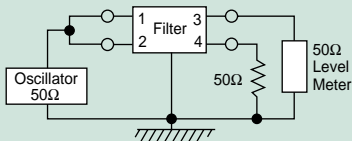
### Circuit Diagrams



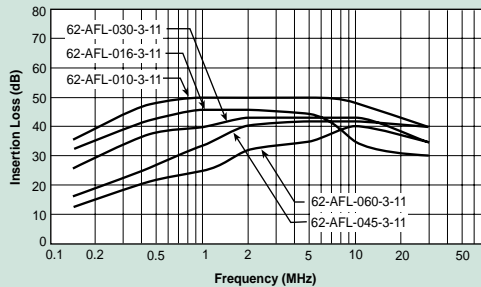
# Power Line Filters Appliance Filters

## 62-AL/62-AC Series

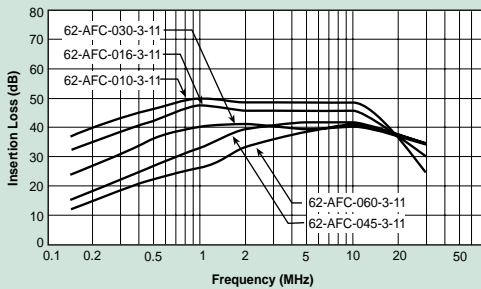
### Common Mode



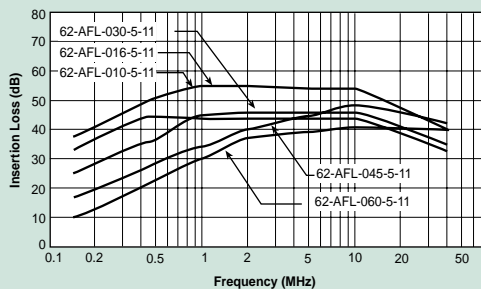
62-AFL-xxx-3-11



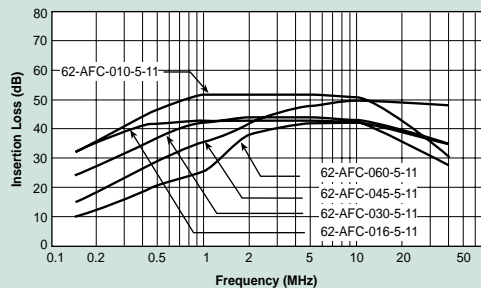
62-AFC-XXX-3-11



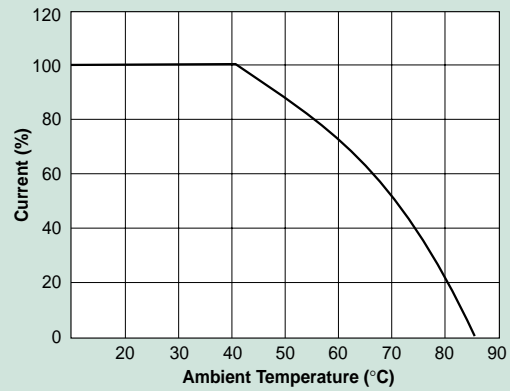
62-AFL-xxx-5-11



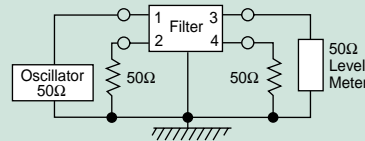
62-AFC-xxx-5-11



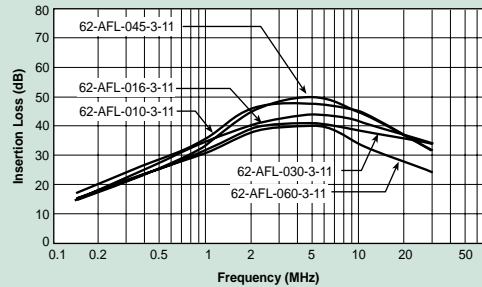
## Temperature Characteristics



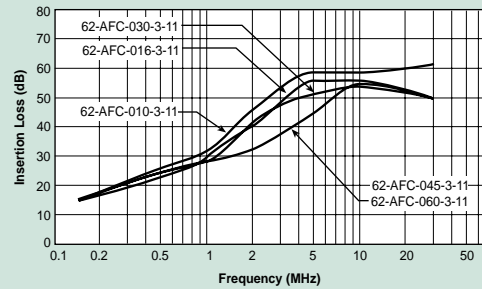
### Normal Mode



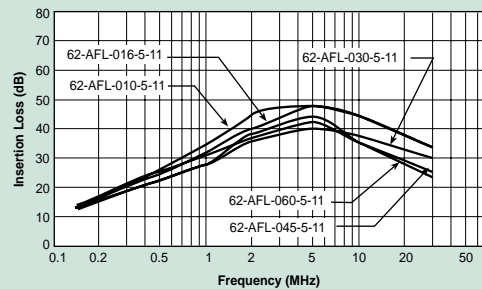
62-AFL-XXX-3-11



62-AFC-XXX-3-11



62-AFL-xxx-5-11



62-AFC-xxx-5-11

